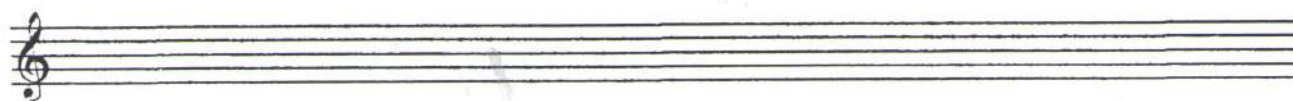
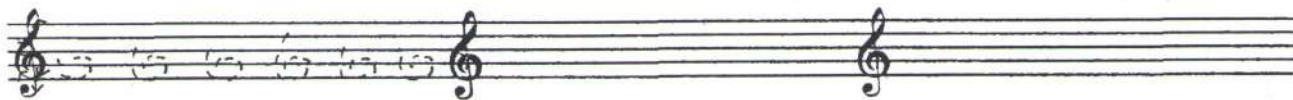
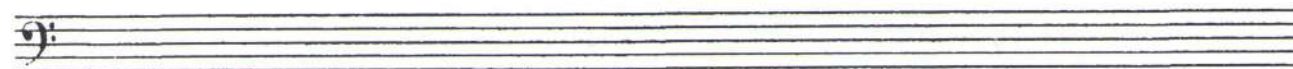


Правописание музыкальных знаков

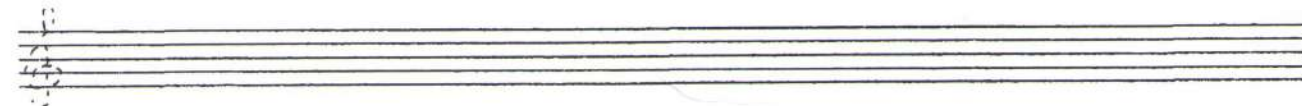
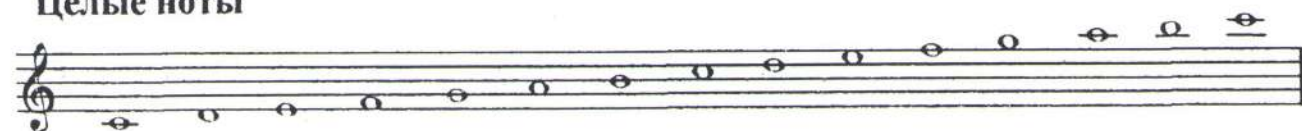
Написать!
Скрипичный ключ



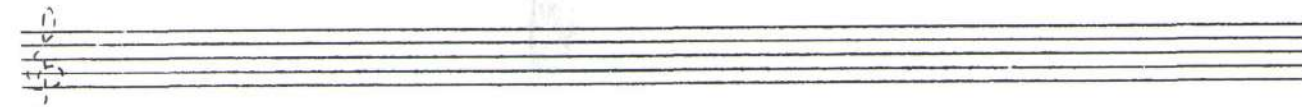
Басовый ключ



Целые ноты



Половинные ноты



Четвертные ноты



Восьмые ноты

Two systems of musical notation. Each system consists of a treble clef staff with a melodic line of eighth notes and a bass clef staff with a corresponding bass line. The first system shows a sequence of eighth notes starting on G4 and moving up to E5. The second system shows a sequence of eighth notes starting on E5 and moving down to G4.

Шестнадцатые ноты

Two systems of musical notation. Each system consists of a treble clef staff with a melodic line of sixteenth notes and a bass clef staff with a corresponding bass line. The first system shows a sequence of sixteenth notes starting on G4 and moving up to E5. The second system shows a sequence of sixteenth notes starting on E5 and moving down to G4.

Паузы:

Two lines of musical notation showing rests. The first line shows a whole rest (целая), a half rest (половинная), and a quarter rest (четвертная). The second line shows an eighth rest (восьмая) and a sixteenth rest (шестнадцатая).

Диезы

A musical staff with a treble clef and a key signature of one sharp (F#). The staff is empty, showing the placement of the sharp sign on the F line.

Бемоли

A musical staff with a treble clef and a key signature of one flat (Bb). The staff is empty, showing the placement of the flat sign on the B line.

Бекары

A musical staff with a treble clef and a key signature of one sharp (F#). The staff is empty, showing the placement of the sharp sign on the F line.